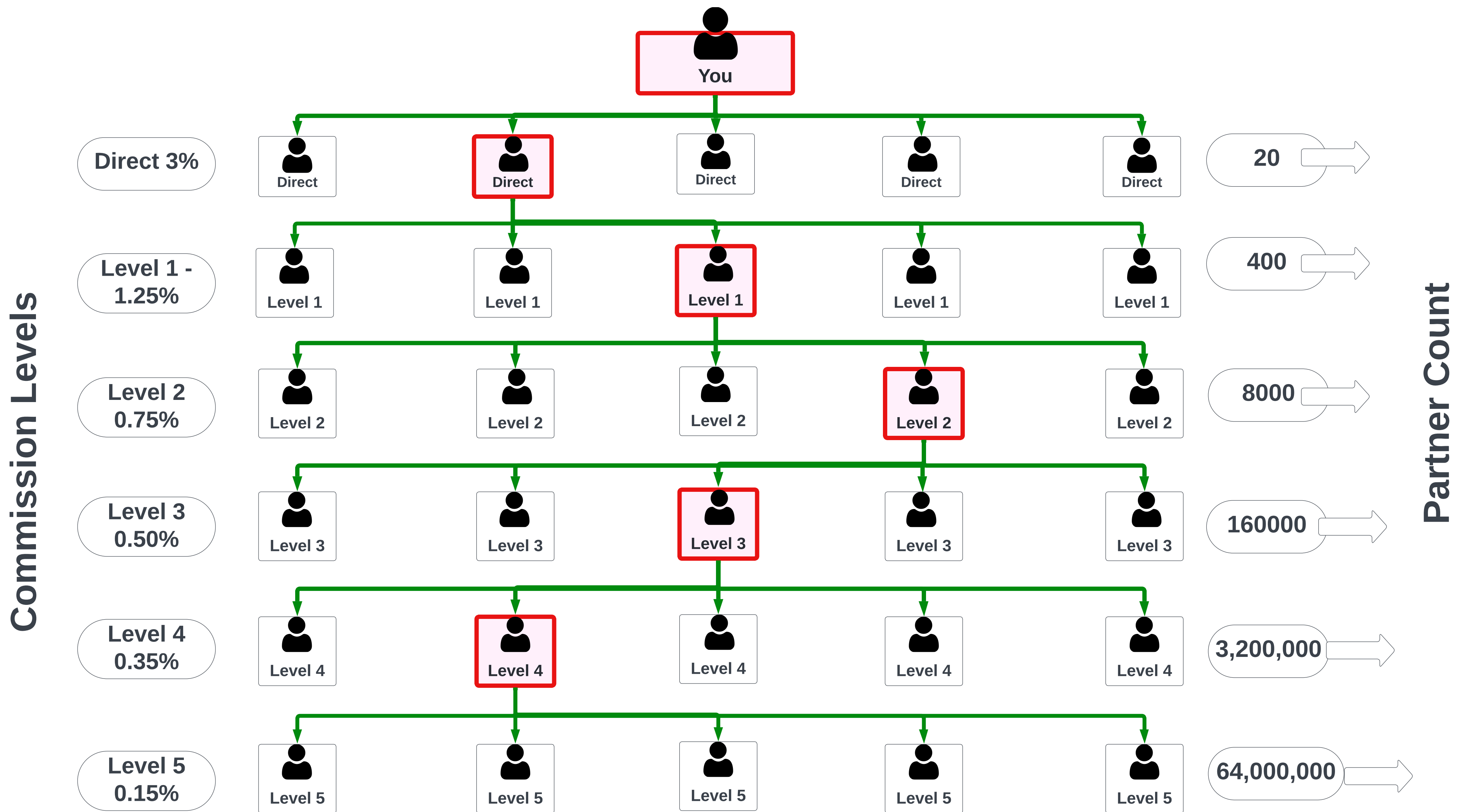


# Commission Structure Maximum Capability (Ceychain)



## Purchasing a \$2000 Plan

Let's explore an example where an individual purchases a \$2000 plan, and we'll outline the potential earnings for the Partner at each level of the multi-level commission structure: **Imagine each one introduce 10 affiliates**

Level	Number of Referrals	Commission Percentage	Total Commission
You - Direct	10	3%	\$600
1	100	1.25%	\$2,500
2	1000	0.75%	\$15,000
3	10,000	0.50%	\$100,000
4	100,000	0.35%	\$700,000
5	1,000,000	0.15%	\$3,000,000